

# Pharmacy Fixture Solutions

Design & Simulation | Production & Manufacturing

Boston Group's fixture solutions bundle a variety of materials and components to create true value. Our unique Pharmacy Fixture System integrates metal, wood, plastic, power and lighting in a modular design format that fits seamlessly into any environment. Standard or custom, Boston Group has the ability to offer the right fixture to fill any need. That's Ingenuity Applied.



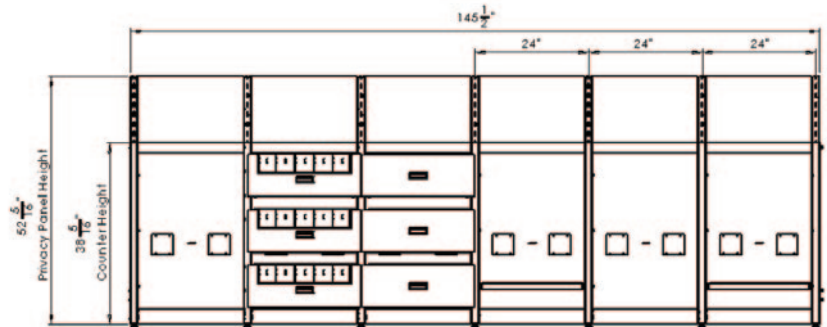
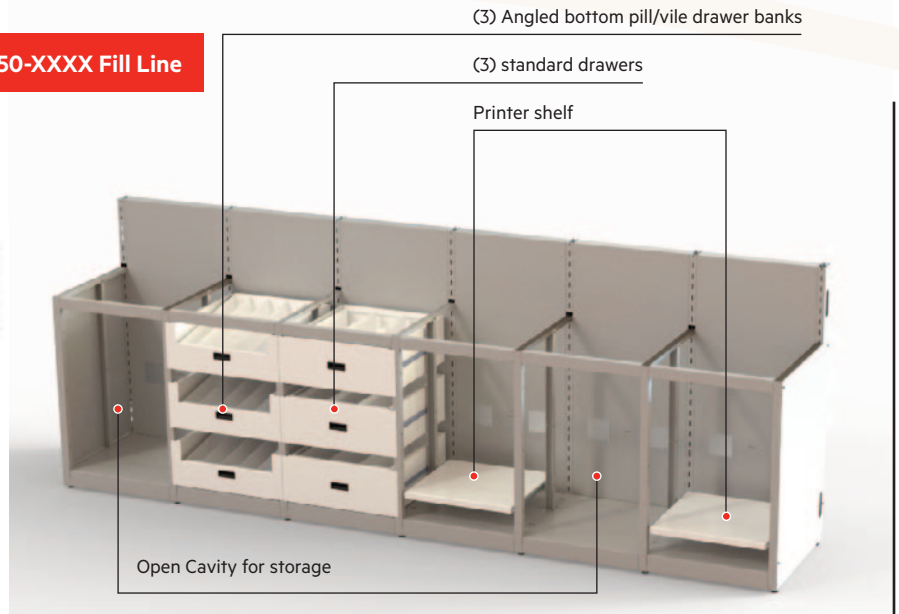
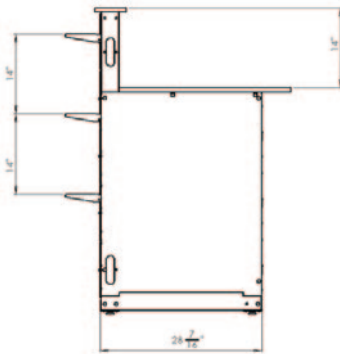
## Applying ingenuity around the world.

Boston Group provides total solutions to energize environments, protect assets and support unique shopping or working experience. We listen carefully, look beyond the challenge and come up with smart solutions, exploring new domains every day together with you. From initial concept to full product rollout we expertly guide the process to deliver the right solutions for your needs.

### Pharmacy Module | #850-XXXX Fill Line



FIXTURE



POWER



PROTECT



FIXTURE

Boston Group

# Pharmacy Fixture Solutions

Design & Simulation | Production & Manufacturing

## Materials & Construction

- Sturdy 16GA cold rolled steel construction
- Ships to customer site partially assembled to speed site installation
- Heavy duty adjustable leveling feet accommodates uneven floors
- Our state of the art Powder Coating line provides the most durable finishes in hundreds of color options
- Riveted corners for structural integrity
- Durable glides support 100lbs per shelf assembly

Angled bottom for self feeding products forward

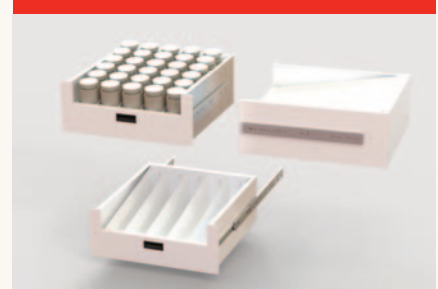
16GA steel frame creates very durable and strong drawer

Separators allow for making compartments for organization

Ergonomic pull handle

Full extension drawer slides allow for full access to contents to drawer

## #850-1349 Angled Bottom Drawer



## #850-1359 Standard Drawer



## Pharmacy Module | #850-XXXX Accessory Modules

Image shown with

- (1) Starter module,
- (2) Add-on modules,
- (3) angled bottom pill/bottle drawers,
- (2) sliding printer shelves and
- (3) sectioned sliding drawers



FIXTURE



POWER



PROTECT



FIXTURE

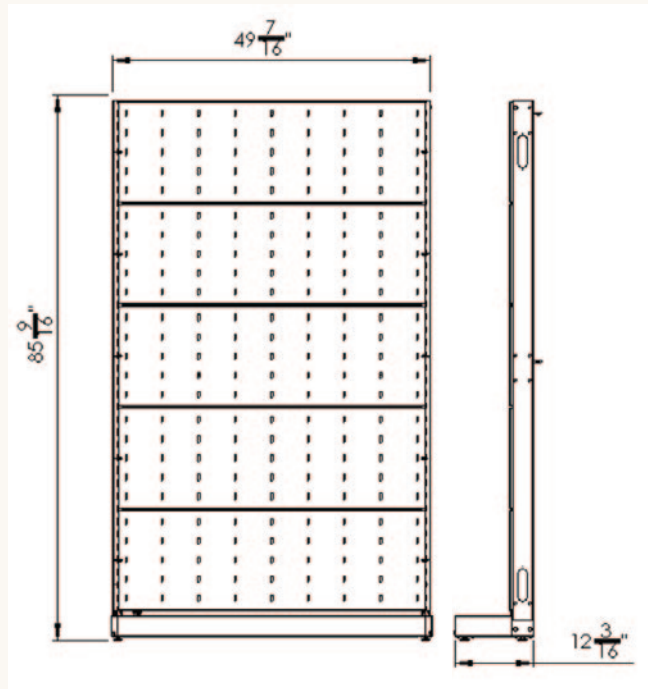
## #850-0222 Printer Shelf



16GA steel frame creates very durable and strong drawer

Full extension drawer slides allow for full access to contents to drawer

## Pharmacy Module | #850-XXXX Back Wall End Cap



Tab and Slot shelves allow for storing products as needed

Structural back panels allow for shelving or hang bars

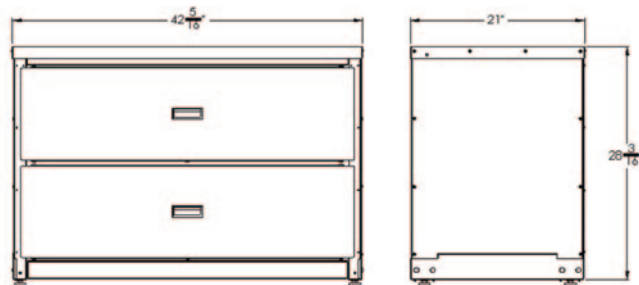
Tab and slot interface to uprights allows for quick assembly

Double sided

Base deck for storage options



## Pharmacy Module | #850-XXXX Back Wall End Cap



Heavy Duty drawer glides allows for 200lbs of stock storage in each drawer

Structural panels allow for stock storage in drawers and on top

Easy Pull Drawer Handles

Full extension drawer slides

Fully Adjustable leveling feet (all 4)



### Materials & Construction

- Sturdy 16GA cold rolled steel construction
- Ships to customer site partially assembled to speed site installation
- Heavy duty adjustable leveling feet accommodates uneven floors
- Our state of the art Powder Coating line provides the most durable finishes in hundreds of color options
- Adjustable leveling feet accommodates uneven floors



**Corporate Headquarters** 3 Highwood West, Suite 100, Tewksbury, MA 01876 Tel. 781-395-7417 — 800-225-1633 (toll-free) — [sales.us@boston-group.com](mailto:sales.us@boston-group.com)

**European Headquarters** Sydneystraat 15, Rotterdam, 3047 BP, Netherlands Tel. +31 10 238 14 00 — [sales.emea@boston-group.com](mailto:sales.emea@boston-group.com) [www.boston-group.com](http://www.boston-group.com)

# Pharmacy Fixture Solutions

Design & Simulation | Production & Manufacturing

## Design & Simulation

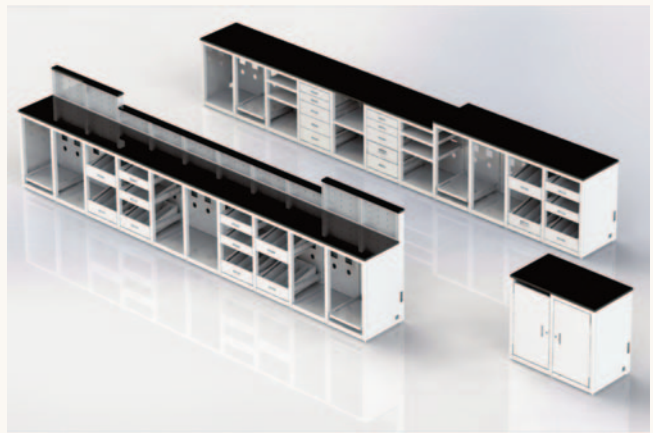
With cutting edge design and manufacturing capabilities Boston Group stays ahead with continuous investment in capabilities to deliver value driven solutions. Our advanced simulation and modeling software allow you to view your fixture design in isolation, as single unit or within the intended environment.

## Production & Manufacturing

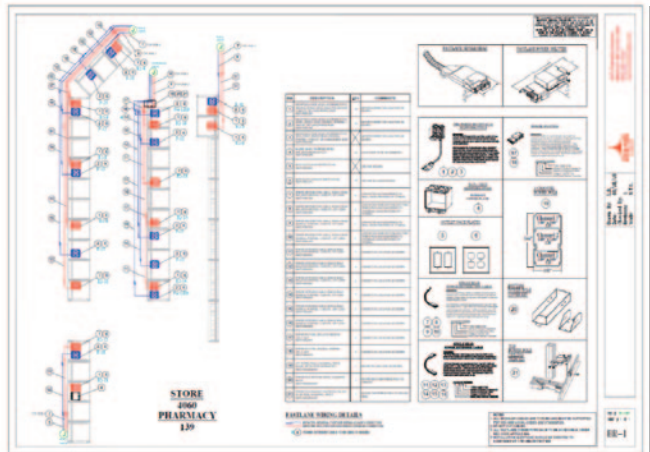
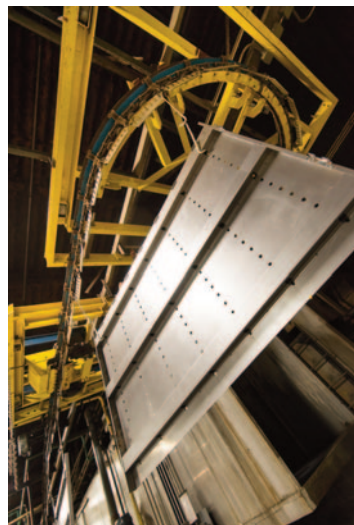
Boston Group employs fully automated manufacturing cells that punch, bend, form and laser-cut to exact specifications, bridging concept to product release.

## Certification & Compliance

We ensure every product we make complies with strict third party national safety standards for mechanical, electrical and environmental compliance.



FIXTURE



POWER



PROTECT



FIXTURE

Boston Group

